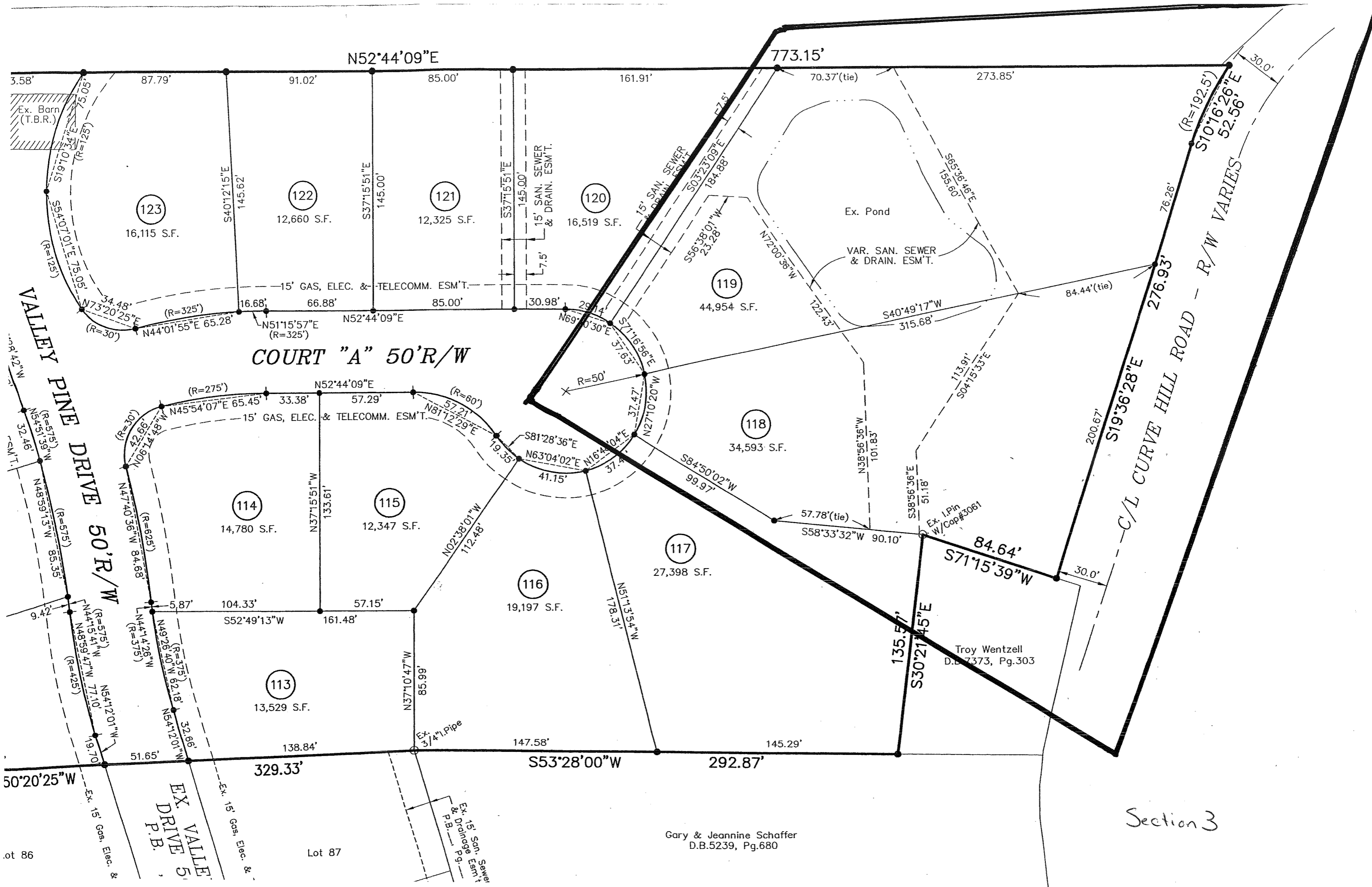


DEVELOPMENT, INC.  
 EYING • LANDSCAPE ARCHITECTURE  
 ITE B, LOUISVILLE, KENTUCKY 40222  
 574 FAX: 502-416-9975  
 WWW.LDD-INC.COM

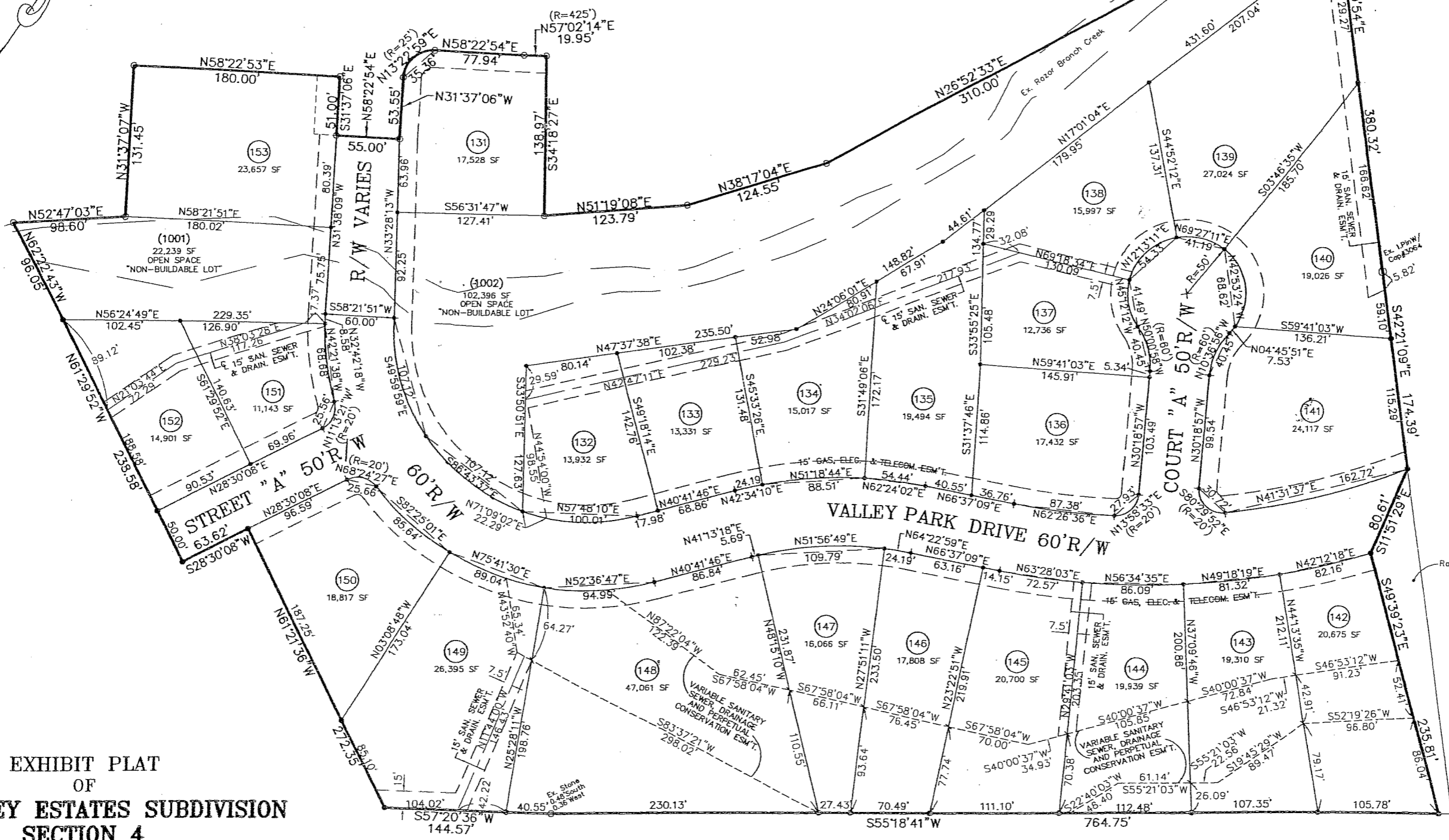
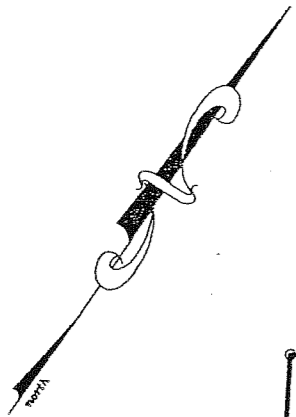


**COURT "A" 50' R/W**

**VALLEY PINE DRIVE 50' R/W**

**C/L CURVE HILL ROAD - R/W VARIES**

Troy Wentzell  
D.B. 7373, Pg. 303



Razor Development, LLC  
 D.B. 7164, Pg. 478

**EXHIBIT PLAT  
 OF  
 PINE VALLEY ESTATES SUBDIVISION  
 SECTION 4**

OWNER/DEVELOPER  
 RAZOR DEVELOPMENT, LLC  
 BRYANT AND ASSOCIATES  
 13108 TRUMP AVENUE, LOU., KY 40299  
 D.B. 7164, PG. 478  
 TAX BLOCK 52, LOT 267  
 PLAT DATE: 6/02/04

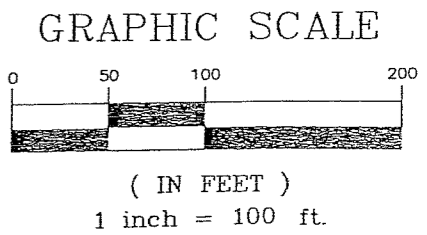
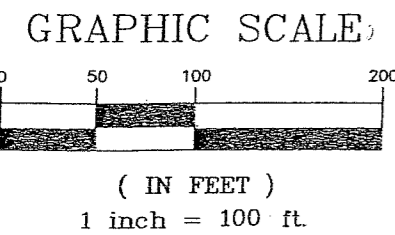
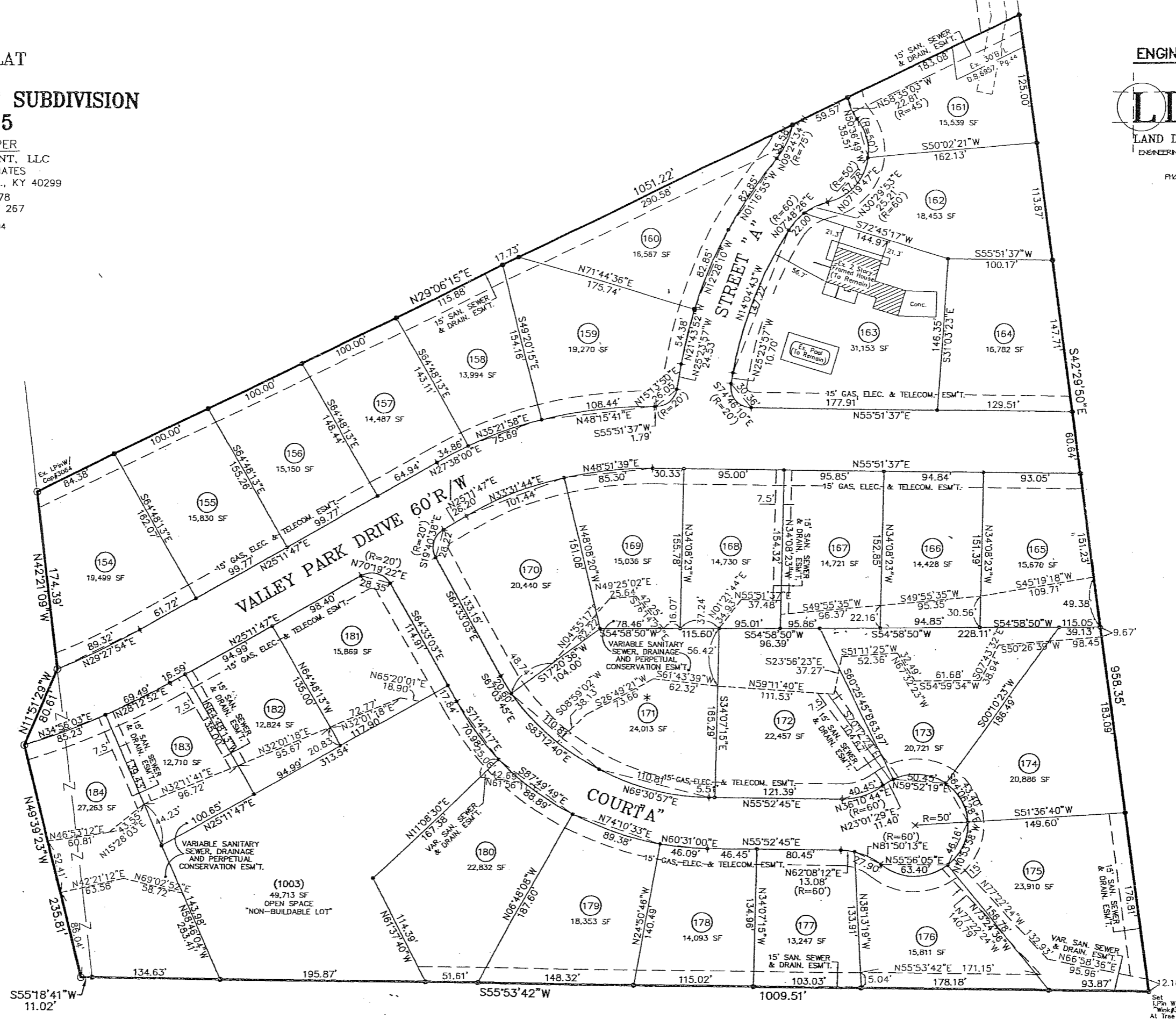


EXHIBIT PLAT  
OF  
PINE VALLEY ESTATES SUBDIVISION  
SECTION 5

OWNER/DEVELOPER  
RAZOR DEVELOPMENT, LLC  
BRYANT AND ASSOCIATES  
13108 TRUMP AVENUE, LOU., KY 40299  
D.B. 7164, PG. 478  
TAX BLOCK 52, LOT 267  
PLAT DATE: 6/02/04

ENGINEER/LAND SURVEYOR

**LD&D**  
LAND DESIGN & DEVELOPMENT, INC.  
ENGINEERING - LAND SURVEYING - LANDSCAPE ARCHITECTURE  
204 VINECREST AVENUE, SUITE B  
LOUISVILLE, KENTUCKY 40212  
PHONE: (502) 414-5974 FAX: (502) 414-5975



Set 1" Pin W/Cop  
Wink #5492  
At Tree Base